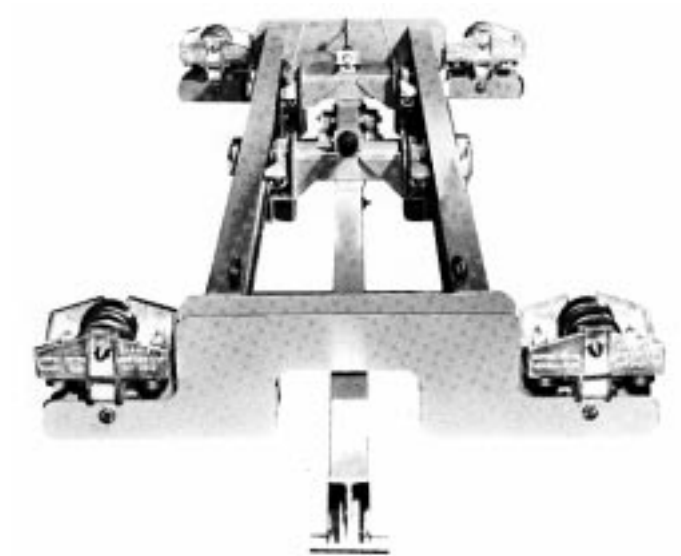




TEL: (517) 546-3220

MANUAL BRIDGE CRANES



Custom bridge cranes for special applications...to your specifications

Double girder telescoping bridge crane

- For extremely low headroom conditions
- Bridge beam operates at the same level as the runway



Dual beam bridge crane for suspension of large fixtures that move parallel to an assembly line for a balanced suspended load condition.



	PAGE
Custom Bridge Cranes	1
Light load Bridge Cranes up to 1000 lb. Rated Load, Spans up to 10 foot.....	3
Medium Load Bridge Cranes	5
Overhanging Bridge Cranes	7
Standard Load Bridge Cranes	9
Heavy Load Bridge Cranes.....	11
Telescoping Counter Balance Unit.....	13
Telescoping Unit Light, Medium Duty Extended Rated Loads, From 100 to 360 lbs.	15
Telescoping Unit Standard Duty Extended Rated Loads From 500 to 2000 lbs.	17
Heavy Duty Telescoping Unit Extended Rated Loads From 2000 to 5325 lbs.....	19
Custom Combination Unit.....	21



Application

Unified light load bridge cranes are designed for the suspension of portable spotwelding guns, power tools, balancers, hoists, fixtures etc., and other light loads not exceeding 1000 pounds.

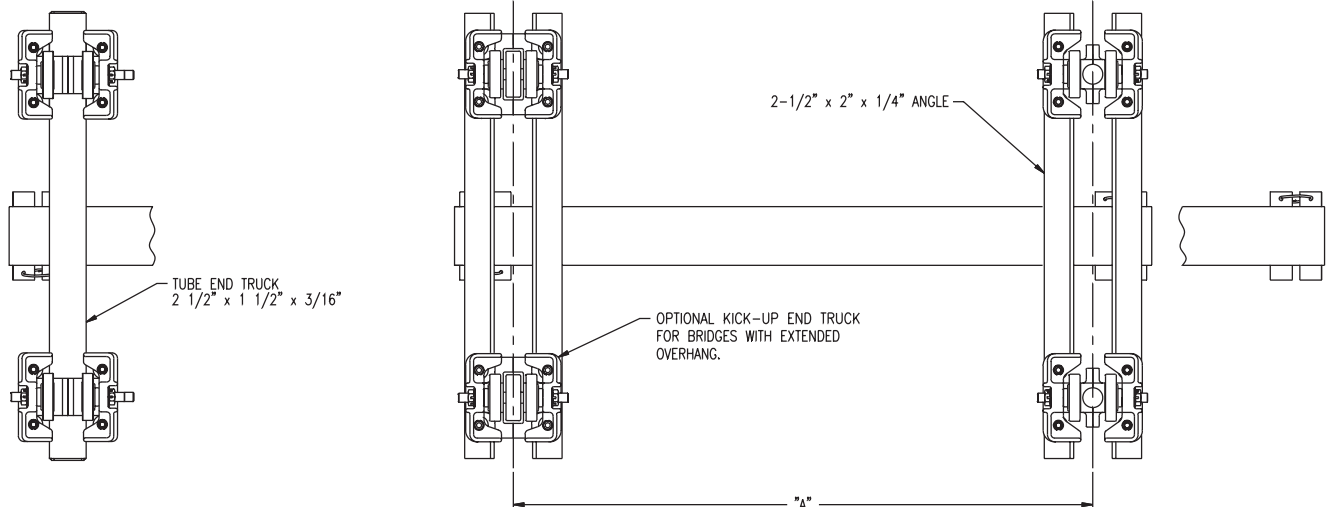
Specifications

Unified light load bridge cranes consist of a pair of end truck assemblies, mounted with either MBC-500-2, MBC-500-3, SAC-500 or AC-500 trolleys, supporting a bridge beam. The bridge beam is a compound section with a hardened and ground flat track 3.25" in width. (See trolley section for trolley specifications).

End trucks are mounted with trolleys for operation on either flat rail or S-Beam. End stops bolted to each end of the bridge complete the assembly.

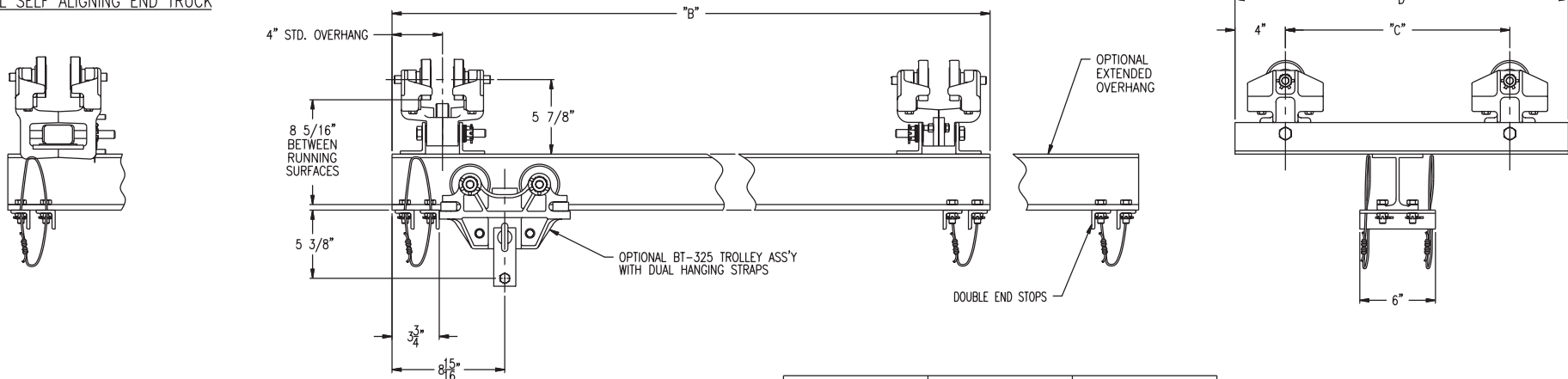
Options

- Bridge beam overhang to your specifications
- Counter thrust wheels or trolleys are available to prevent "kick-up" action when suspended load must be extended beyond bridge span
- Standard redundant end stops (option for single end stop.)



NOTE:
 BRIDGE CRANES ARE ALL JIGGED AND FIXTURED IN MACHINING AND ASSEMBLY TO INSURE PROPER ALIGNMENT.
RATED LOAD
 VALUES BASED ON DEFLECTION OF APPROX. 1/550 OF BRIDGE BEAM SPAN OF END TRUCK TROLLEY RATING.
WT. COMPLETE
 FOR BRIDGE CRANE ASSEMBLY INCLUDING END TRUCK TROLLEYS. THIS DOES NOT INCLUDE LOAD SUSPENSION TROLLEY.

OPTIONAL SELF ALIGNING END TRUCK



BRIDGE SPAN A		OVERALL B		WHEEL BASE C		OVERALL D		RATED LOAD		MBC-500-2		MBC-500-2		MBC-500-2	
										MBC-500-2		MBC-500-3		SAC-500	
										WT. COMPLETE		WT. COMPLETE		WT. COMPLETE	
2'-0"	609 mm	2'-8"	812 mm	14"	355 mm	22"	558 mm	1000 LBS	448 KGS	90 LBS	40.3 KGS	96 LBS	43 KGS	90 LBS	40.3 KGS
3'-0"	914 mm	3'-8"	1117 mm	14"	355 mm	22"	558 mm	1000 LBS	448 KGS	96 LBS	43 KGS	102 LBS	45.7 KGS	96 LBS	43 KGS
4'-0"	1219 mm	4'-8"	1422 mm	18"	457 mm	26"	660 mm	1000 LBS	448 KGS	108 LBS	48.4 KGS	114 LBS	51.1 KGS	107 LBS	47.9 KGS
5'-0"	1524 mm	5'-8"	1727 mm	18"	457 mm	26"	660 mm	1000 LBS	448 KGS	121 LBS	54.2 KGS	127 LBS	56.9 KGS	127 LBS	56.9 KGS
6'-0"	1828 mm	6'-8"	2032 mm	24"	609 mm	32"	812 mm	1000 LBS	448 KGS	134 LBS	60.0 KGS	139 LBS	62.3 KGS	133 LBS	59.6 KGS
7'-0"	2133 mm	7'-8"	2336 mm	30"	762 mm	38"	965 mm	1000 LBS	448 KGS	146 LBS	65.4 KGS	152 LBS	68.1 KGS	145 LBS	65 KGS
8'-0"	2438 mm	8'-8"	2641 mm	30"	762 mm	38"	965 mm	1000 LBS	448 KGS	159 LBS	71.2 KGS	165 LBS	73.9 KGS	158 LBS	70.8 KGS
9'-0"	2743 mm	9'-8"	2946 mm	34"	863 mm	42"	1066 mm	750 LBS	336 KGS	172 LBS	77.1 KGS	178 LBS	79.7 KGS	171 LBS	76.6 KGS
10'-0"	3048 mm	10'-8"	3251 mm	34"	863 mm	42"	1066 mm	500 LBS	224 KGS	185 LBS	82.9 KGS	190 LBS	85.1 KGS	183 LBS	82 KGS



Application

Unified medium load bridge cranes are designed for the suspension of portable spotwelding guns, power tools, balancers, hoists, fixtures etc., and other medium loads not exceeding 3000 pounds.

Specifications

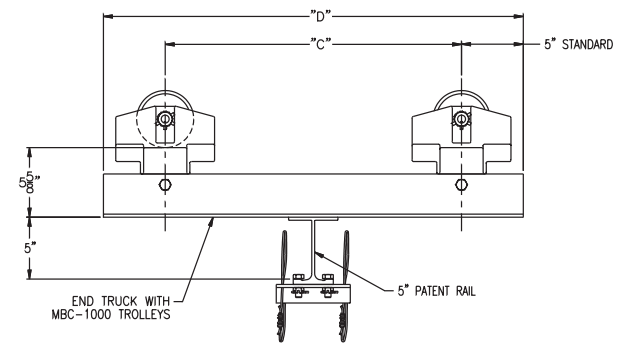
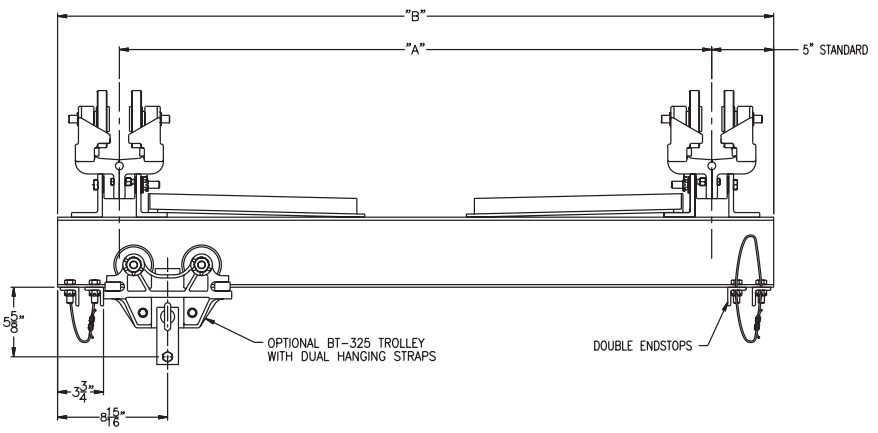
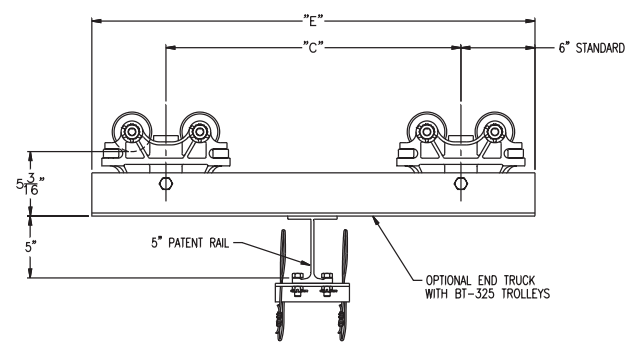
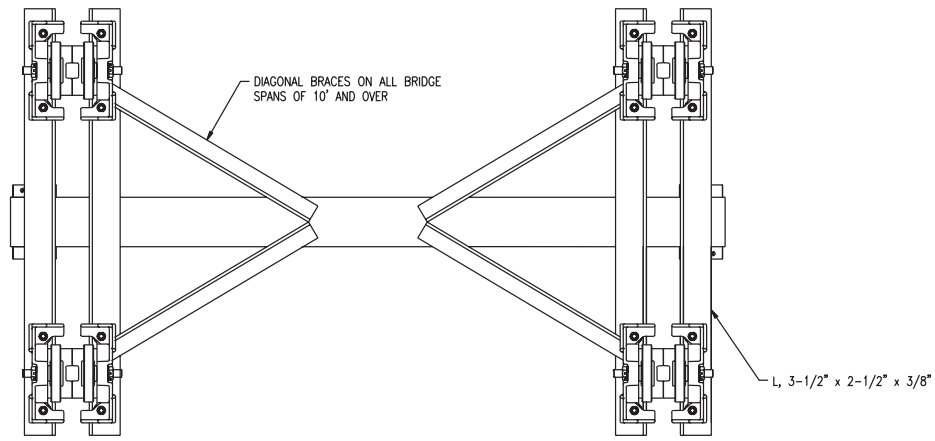
Unified medium load bridge cranes consist of a pair of end truck assemblies, mounted with either BT-325 or MBC-1000 trolleys, supporting a bridge beam. The bridge beam is a compound section with a hardened and ground flat track 3.25" in width. (See page 23 or 29 for trolley specifications).

End trucks are mounted with trolleys for operation on either flat rail or S-Beam. End stops bolted to each end of the bridge complete the assembly.

Spans of 10 feet or more have diagonal bracing from bridge beam to end trucks.

Options

- Bridge beam overhang to your specifications
- Counter thrust wheels or trolleys are available to prevent "kick-up" action when suspended load must be extended beyond bridge span
- Special bridge crane spans over 12 feet will be furnished with 6" compound section bridge beam flat flange 3.25" in width
- Standard redundant end stops (option for single end stop.)

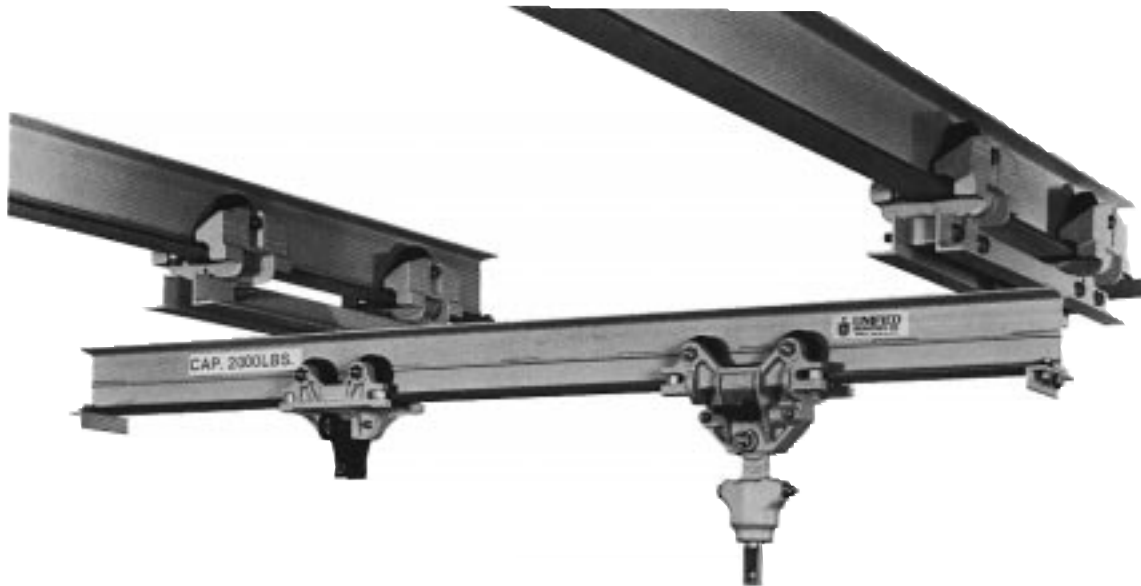


BRIDGE				END TRUCK				OPTION		△ RATED LOAD		⊠ WT. COMPLETE	
SPAN		OVERALL		WHEEL BASE		OVERALL		E	MM	LBS	Kgs	LBS	Kgs
A	MM	B	MM	C	MM	D	MM						
3'-0"	914.4	3'-10"	1168.4	18"	457.2	28"	711.2	30"	762	3000	1344	178	79.7
4'-0"	1219.2	4'-10"	1473.2	18"	457.2	28"	711.2	30"	762	3000	1344	191	85.6
5'-0"	1524	5'-10"	1778	24"	609.6	34"	863.6	36"	914.4	3000	1344	219	98.1
6'-0"	1828.8	6'-10"	2082.8	24"	609.6	34"	863.6	36"	914.4	3000	1344	231	103.5
7'-0"	2133.6	7'-10"	2387.6	30"	762	40"	1016	42"	1066.8	3000	1344	259	116
8'-0"	2438.4	8'-10"	2692.4	30"	762	40"	1016	42"	1066.8	3000	1344	271	121.4
9'-0"	2743.2	9'-10"	2997.2	36"	914.4	46"	1168.4	48"	1219.2	3000	1344	299	134
10'-0"	3048	10'-10"	3302	40"	1016	50"	1270	52"	1320.8	3000	1344	354	158.6
11'-0"	3352.8	11'-10"	3606.8	40"	1016	50"	1270	52"	1320.8	2800	1254.4	366	164
12'-0"	3657.6	12'-10"	3911.6	48"	1219.2	58"	1473.2	60"	1524	2500	1120	399	178.8
13'-0"	3962.4	13'-10"	4216.4	48"	1219.2	58"	1473.2	60"	1524	2000	896	411	184.1
14'-0"	4267.2	14'-10"	4521.2	54"	1371.6	64"	1625.6	66"	1676.4	2000	896	439	196.7
15'-0"	4572	15'-10"	4826	54"	1371.6	64"	1625.6	66"	1676.4	2000	896	452	202.5

△ RATED LOAD:
 VALUES ARE BASED ON DEFLECTION OF APPROX. 1/550 OF BRIDGE BEAM SPAN OR END TRUCK TROLLEY RATING

⊠ WT.
 FOR BRIDGE CRANE ASSEMBLY INCLUDING END TRUCK TROLLEYS THIS DOES NOT INCLUDE LOAD SUSPENSION TROLLEY.

- NOTES:
- (1) BRIDGE BEAMS OVER 12 FT. [3657.6 mm] SPANS WILL BE FURNISHED WITH 6" [152] BRIDGE BEAM
 - (2) BRIDGE CRANES ARE JICGED AND FIXTURED IN MACHNING AND ASSEMBLY PROCESS FOR ALIGNMENT
 - (3) WEIGHTS SHOWN ARE FOR BRIDGE CRANE ASSEMBLIES WITH EITHER MBC-1500 CARRIER HEADS, OR BT-325, 4 WHEEL TROLLEY.



Application

Unified overhanging bridge cranes are designed for the suspension of portable spotweld guns, power tools, balancers, hoists, fixtures etc. and other loads not exceeding recommended rated loads. See next page for rated loads of various overhangs.

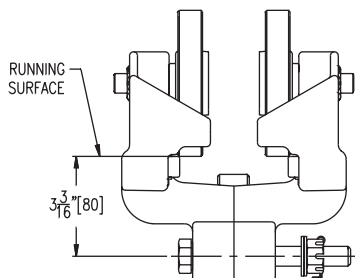
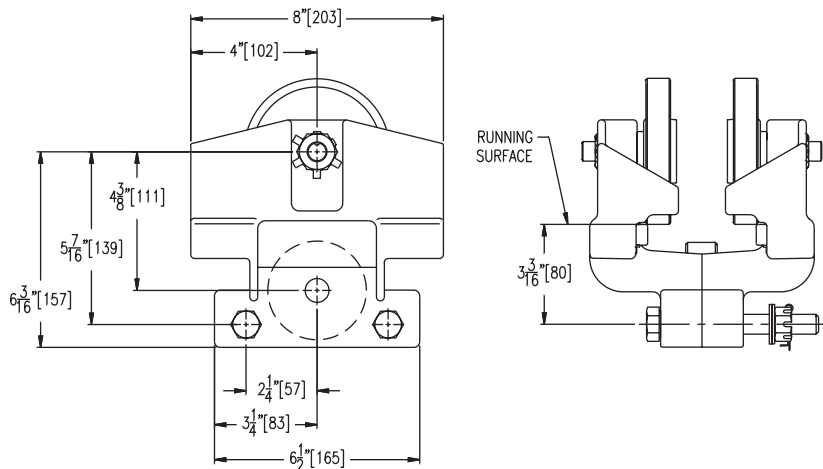
Specifications

Unified overhanging bridge cranes consist of a pair of end truck assemblies, mounted with two MBC-1000 trolleys and two MBC-1000-3 trolleys on opposite end of overhang, supporting a bridge beam. The bridge beam is a compound section with a hardened and ground flat rail 3.25" in width. See next page for various spans and rated loads.

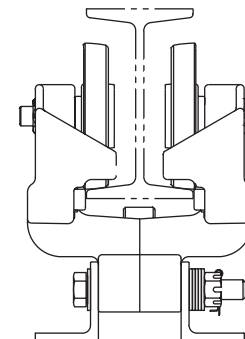
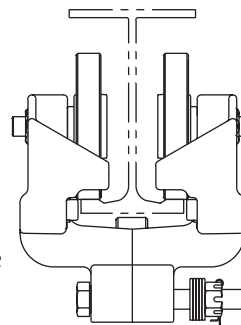
End trucks are mounted with trolleys for operation on either flat rail or S-Beam. End stops bolted to each end of the bridge beam complete the assembly. Spans of 10 feet or more have diagonal bracing from bridge beam to end trucks.

Options

- Bridge beam overhang opposite of regular overhang to suit your requirements
- Standard redundant end stops (option for single end stop.)



MBC-1000-3-325
 TWO WHEEL TROLLEY WITH COUNTER THRUST WHEEL FOR OPERATION ON FLAT RAIL WITH 3.25" [82.5] OR 3.33" [84.6] FLANGE WIDTH. SPECIFY 1000 LBS [448 Kgs] OR 1500 LBS [672 Kgs] CAPACITY.

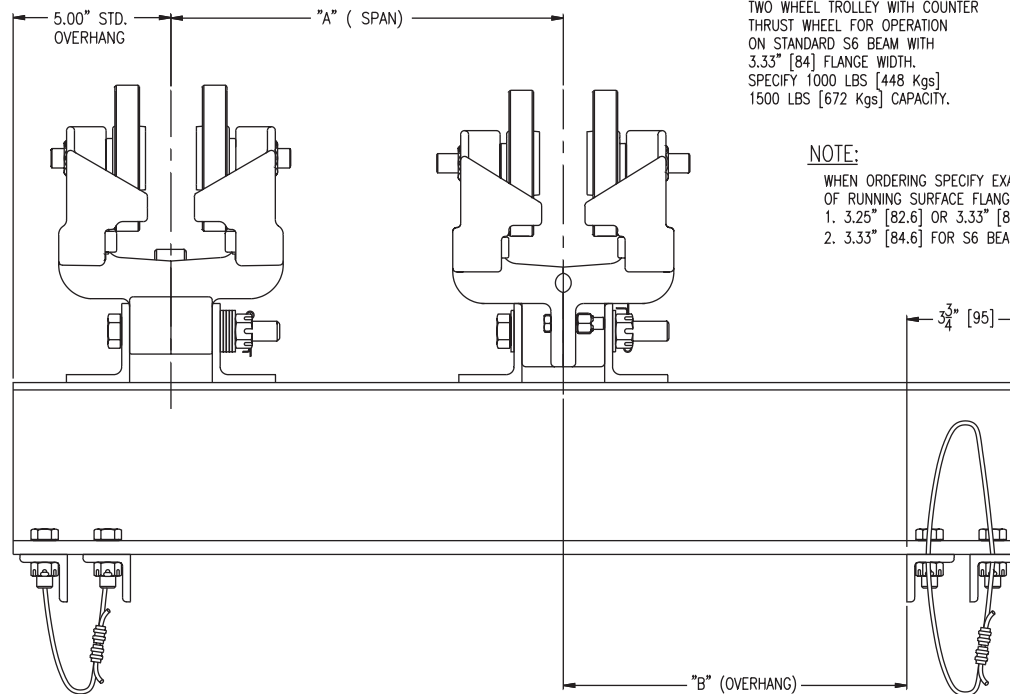
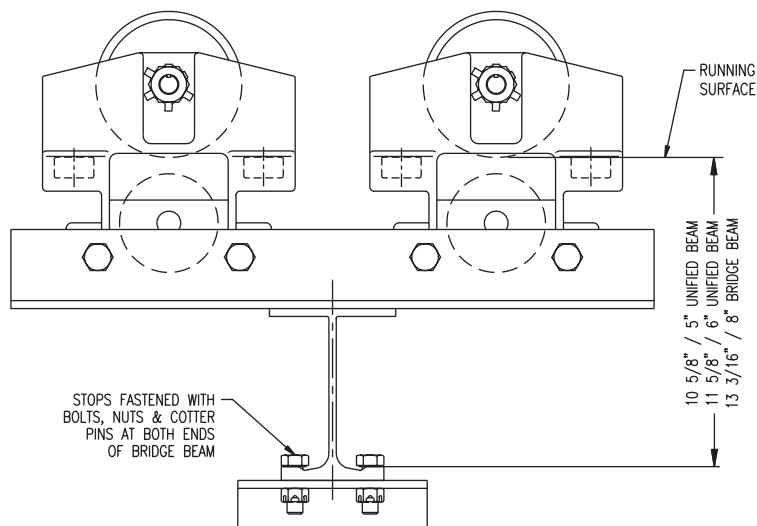


MBC-1000-3-333

TWO WHEEL TROLLEY WITH COUNTER THRUST WHEEL FOR OPERATION ON STANDARD S6 BEAM WITH 3.33" [84] FLANGE WIDTH. SPECIFY 1000 LBS [448 Kgs] OR 1500 LBS [672 Kgs] CAPACITY.

NOTE:

- WHEN ORDERING SPECIFY EXACT WIDTH OF RUNNING SURFACE FLANGE.
- 3.25" [82.6] OR 3.33" [84.6] FOR FLAT RAIL
 - 3.33" [84.6] FOR S6 BEAM



OVERHANG LOAD RATING FOR 8" BRIDGE BEAM							OVERHANG LOAD RATING FOR 5" UNIFIED BRIDGE BEAM												
"A" FT.	"A" (MM)	B=36" (914MM)		B=42" (1066MM)		B=48" (1219MM)		"A" FT.	"A" (MM)	B=12" (304MM)		B=18" (457MM)		B=24" (609MM)		B=30" (762MM)		B=36" (914MM)	
		LBS	KGS	LBS	KGS	LBS	KGS			LBS	KGS	LBS	KGS	LBS	KGS	LBS	KGS	LBS	KGS
3	914	1650	739	1500	672	1350	605	3	914	2000	896	1800	806	1500	672	1200	538	900	403
4	1219	1850	829	1700	762	1600	717	4	1219										
5	1524	2000	896	1850	829	1750	784	12	3657										
6	1828	2100	941	2000	896	1850	829												
12	3657	2500	1120	2400	1075	2300	1030												

TROLLEY SPECIFICATIONS

RATED LOAD: 1000 LBS. [448 Kgs]
 WEIGHT: 16 LBS. [7.2 Kgs]
 BODY: HIGH TENSILE ALMAG
 WHEEL: 4.625 [117.48] DIA.
 STUD: 5/8" [15] DIA.
 ROLLERS: BALL BEARING HARDENED & GROUND

LAB TESTING DATA

TANDEM
 YIELD STRENGTH: 14,000 [6272 Kgs]
 TANDEM ULTIMATE
 TENSILE STRENGTH: 20,500 [9184 Kgs]



Application

Unified standard load bridge cranes are designed for the suspension of portable spotwelding guns and transformer stations, balancers, hoists, fixtures etc. and other loads not exceeding 3000 pounds.

Specifications

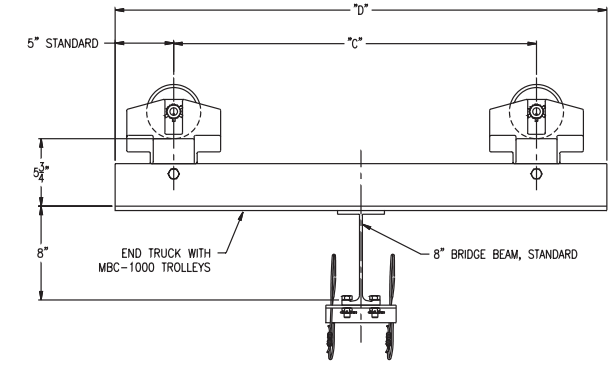
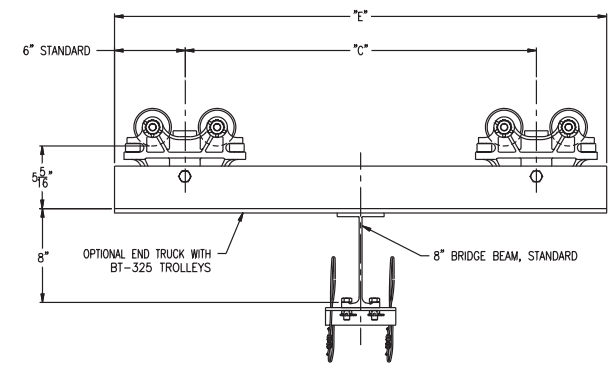
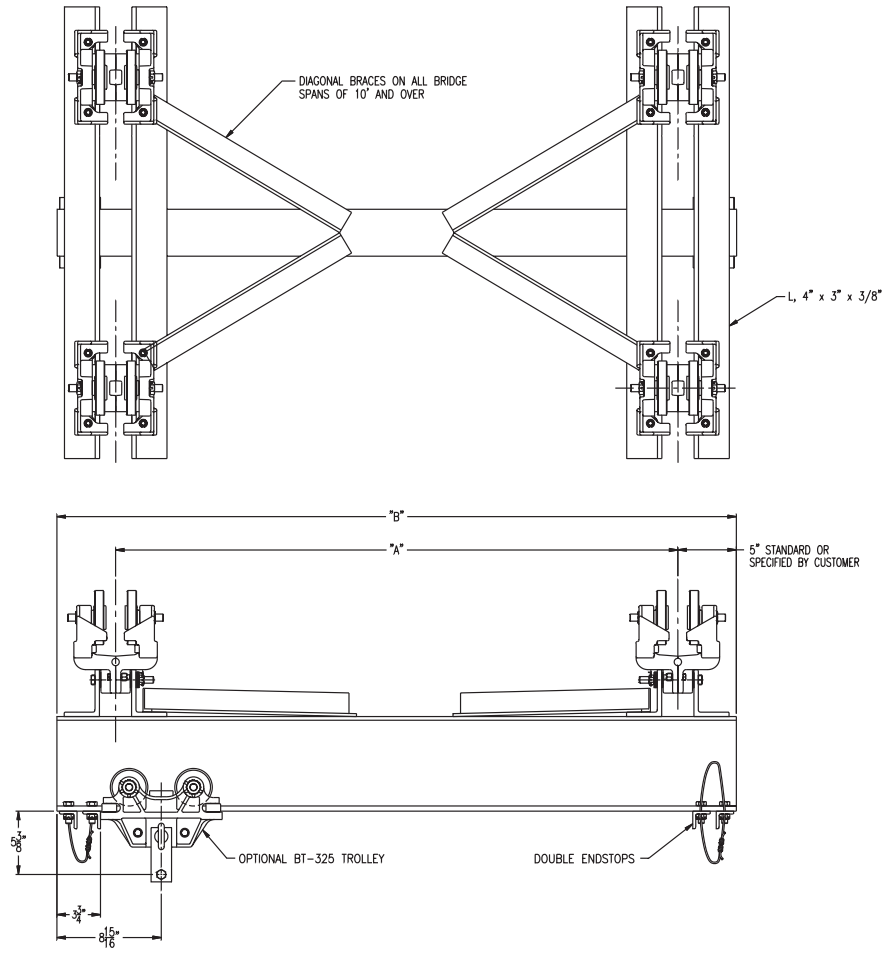
Unified standard load bridge cranes consist of a pair of end truck assemblies, mounted with either BT-325 or MBC-1000 trolleys, supporting a bridge beam. The bridge beam is a compound section 8" in height with a hardened and ground flat track 3.25" in width. (See trolley section for trolley specifications).

End trucks are mounted with trolleys for operation on either flat rail or S-Beam. End stops bolted to each end of the bridge beam complete the assembly.

Spans of 10 feet or more have diagonal bracing from bridge beam to end trucks.

Options

- Bridge beam overhang to your specifications
- Counter thrust wheels or trolleys are available to prevent "kick-up" action when suspended load must be extended beyond bridge span
- Standard redundant end stops (option for single end stop.)



BRIDGE				END TRUCK				OPTION		△ RATED LOAD		⊠ WT. COMPLETE	
SPAN		OVERALL		WHEEL BASE		OVERALL				LBS	Kgs	LBS	Kgs
A	MM	B	MM	C	MM	D	MM	E	MM				
3'-0"	914.4	3'-10"	1168.4	18"	457.2	28"	711.2	30"	762	3000	1344	199	89.2
4'-0"	1219.2	4'-10"	1473.2	18"	457.2	28"	711.2	30"	762	3000	1344	215	96.3
5'-0"	1524	5'-10"	1778	24"	609.6	34"	863.6	36"	914.4	3000	1344	248	111.1
6'-0"	1828.8	6'-10"	2082.8	24"	609.6	34"	863.6	36"	914.4	3000	1344	264	118.3
7'-0"	2133.6	7'-10"	2387.6	30"	762	40"	1016	42"	1066.8	3000	1344	297	133.1
8'-0"	2438.4	8'-10"	2692.4	30"	762	40"	1016	42"	1066.8	3000	1344	313	140.2
9'-0"	2743.2	9'-10"	2997.2	36"	914.4	46"	1168.4	48"	1219.2	3000	1344	346	155
10'-0"	3048	10'-10"	3302	40"	1016	50"	1270	52"	1320.8	3000	1344	406	181.9
11'-0"	3352.8	11'-10"	3606.8	40"	1016	50"	1270	52"	1320.8	2800	1254.4	422	189.1
12'-0"	3657.6	12'-10"	3911.6	48"	1219.2	58"	1473.2	60"	1524	2500	1120	460	206.1
13'-0"	3962.4	13'-10"	4216.4	48"	1219.2	58"	1473.2	60"	1524	2000	896	481	215.5
14'-0"	4267.2	14'-10"	4521.2	54"	1371.6	64"	1625.6	64"	1676.4	2000	896	514	230.3
15'-0"	4572	15'-10"	4826	54"	1371.6	64"	1625.6	64"	1676.4	2000	896	530	237.4

△ RATED LOAD

VALUES ARE BASED ON DEFLECTION OF APPROX. 1/550 OF BRIDGE BEAM SPAN OR END TRUCK TROLLEY RATING

⊠ WT.

FOR BRIDGE CRANE ASSEMBLY INCLUDING END TRUCK TROLLEYS THIS DOES NOT INCLUDE LOAD SUSPENSION TROLLEY.

NOTE:

BRIDGE CRANES ARE ALL JIGGED AND FIXTURED IN MACHINING AND ASSEMBLY PROCESS FOR ALIGNMENT



Application

Unified heavy load bridge cranes are designed for the suspension of balancers, hoists, fixtures, heavy portable tools etc. and other heavy loads not exceeding 8000 pounds.

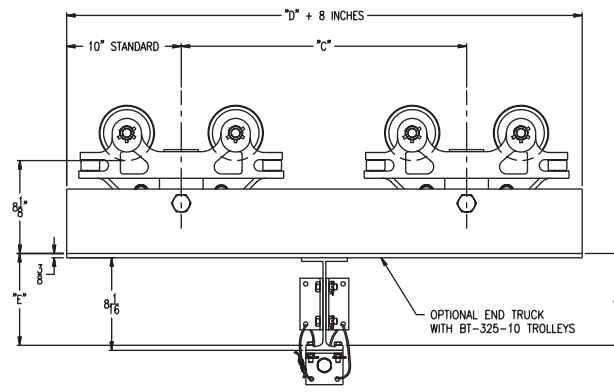
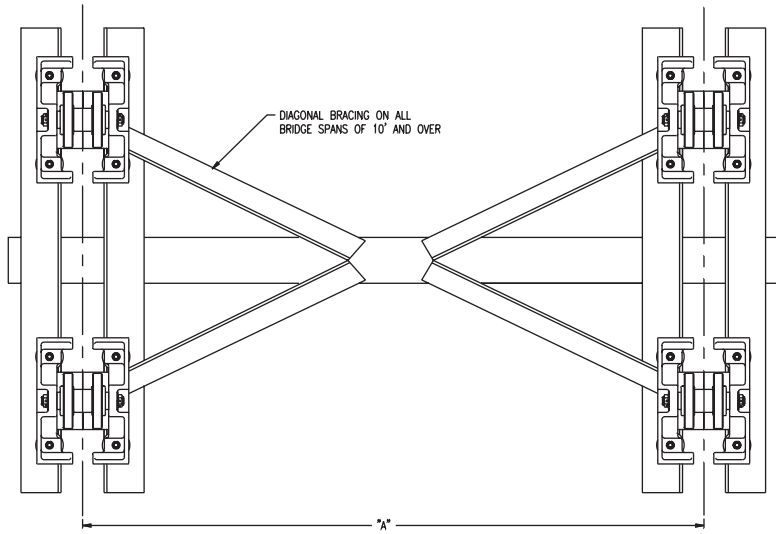
Specifications

Unified heavy load bridge cranes consist of a pair of end truck assemblies, mounted with either BT-325-10, or MBC-2500 trolleys, supporting a bridge beam. The bridge beam is a compound section either 8" or 8 1/2" in height with a hardened and ground flat track 3.25" in width. (See trolley section for trolley specifications). End trucks are mounted with trolleys for operation on either flat rail or S-beam. Bolted end stops with neoprene bumpers complete the assembly.

Spans of 10 feet or more have diagonal bracing from bridge beam to end trucks.

Options

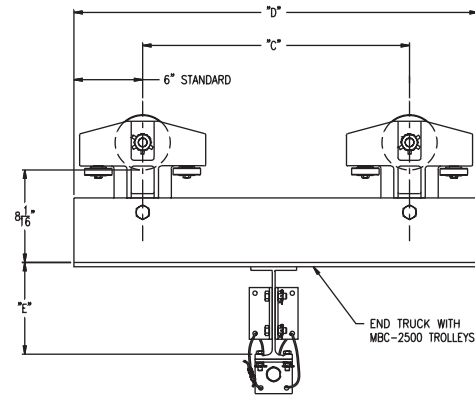
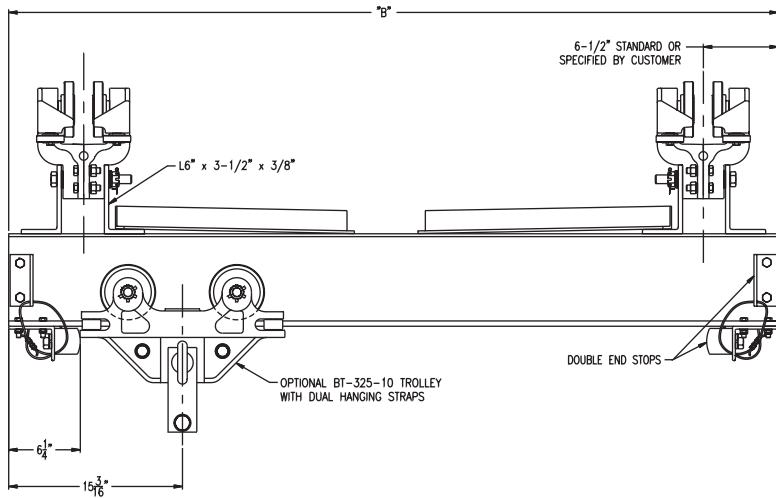
- Bridge beam overhang to your specifications
- Counter thrust wheels can be furnished on request when suspended load must be extended beyond bridge span
- 10" compound section bridge beam with hardened and ground flat rail 3.25" in width
- Standard redundant end stops (option for single end stop.)



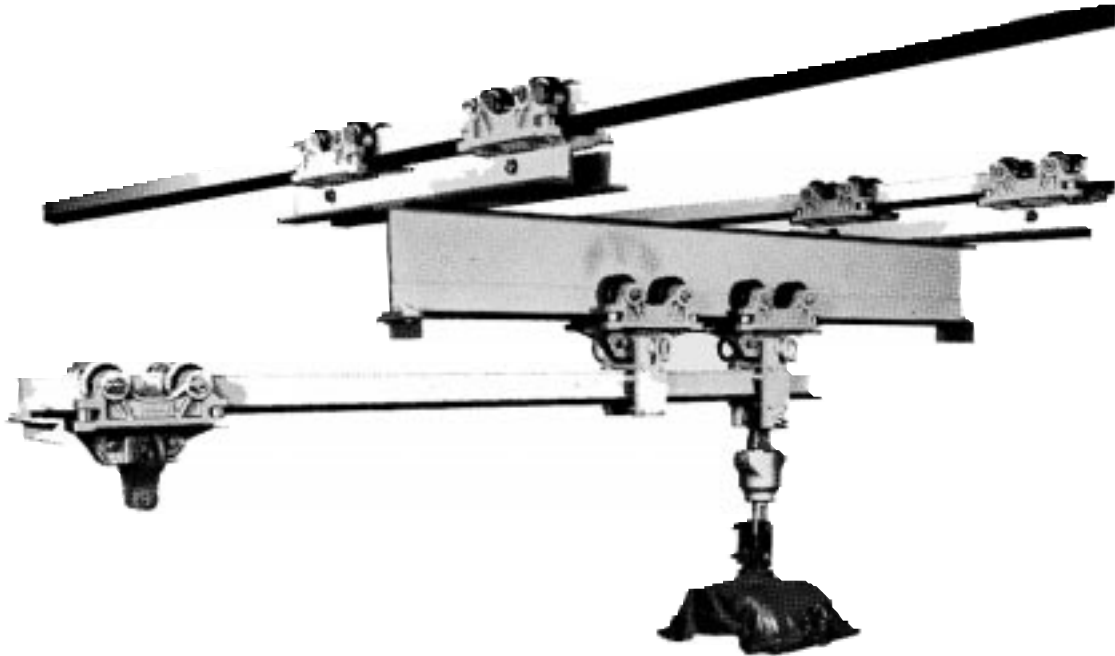
△ RATED LOAD:
VALUES BASED ON DEFLECTION OF APPROX. 1/500 OF BRIDGE BEAM SPAN OF END TRUCK TROLLEY RATING.

◇ WT.
IS FOR BRIDGE ASSEMBLY INCLUDING END TRUCK TROLLEYS, THIS DOES NOT INCLUDE LOAD SUSPENSION TROLLEY. NOTE: WHEN BT-325-10 TROLLEYS ARE USED FOR END TRUCKS ADD 120 LBS (54 Kgs) TO BRIDGE ASSEMBLY.

NOTE:
BRIDGE CRANES ARE ALL JIGGED AND FIXTURED IN MACHINING AND ASSEMBLY TO INSURE PROPER ALIGNMENT



HEAVY LOAD BRIDGE CRANE ASSEMBLY								
	BRIDGE		END TRUCK		RATED LOAD		WEIGHT COMPLETE	
	SPAN	OVERALL	WHEEL BASE	OVERALL	Lb	kg	Lb	kg
8" BRIDGE BEAM	"A" (mm)	"B" (mm)	"C" (mm)	"D" (mm)	6000	2688	341	153
	5'-0 (1524.0)	6'-1 (1854.2)	2'-0 (609.6)	3'-0 (914.4)				
	6'-0 (1828.8)	7'-1 (2159.0)						
	7'-0 (2133.6)	8'-1 (2463.8)						
	8'-0 (2438.4)	9'-1 (2768.6)	2'-6 (762.0)	3'-6 (1066.8)				
	9'-0 (2743.2)	10'-1 (3073.4)	3'-0 (914.4)	4'-0 (1219.2)				
	10'-0 (3048.0)	11'-1 (3378.2)	3'-4 (1016.0)	4'-4 (1320.8)				
	11'-0 (3352.8)	12'-1 (3683.0)						
	12'-0 (3657.6)	13'-1 (3987.8)						
	13'-0 (3962.4)	14'-1 (4292.6)	4'-0 (1219.2)	5'-0 (1524.0)				
14'-0 (4267.2)	15'-1 (4597.4)	4'-6 (1371.6)	5'-6 (1676.4)					
15'-0 (4572.0)	16'-1 (4902.2)							
8 1/2" BRIDGE BEAM	14'-0 (4267.2)	15'-1 (4597.4)	4'-6 (1371.6)	5'-6 (1676.4)	2600	1164	638	286
	15'-0 (4572.0)	16'-1 (4902.2)			2200	985	654	293
	16'-0 (4876.8)	17'-1 (5207.0)	5'-0 (1524.0)	6'-0 (1828.8)	6000	2688	691	310
	17'-0 (5181.6)	18'-1 (5511.8)	5'-6 (1676.4)	6'-6 (1981.2)	5200	2329	711	319
	18'-0 (5486.4)	19'-1 (5816.6)			4500	2016	763	342
	19'-0 (5791.2)	20'-1 (6121.4)	6'-0 (1828.8)	7'-0 (2133.6)	4000	1792	783	351
	20'-0 (6096.0)	21'-1 (6426.2)			3500	1568	853	382
					3100	1388	873	391



Application

Unified telescoping counter balance units are designed primarily to accommodate portable gun welding transformer on one end and portable spot welding gun on other end. Counter balance is achieved by adjusting transfer beam trolley wheelbase.

Specifications

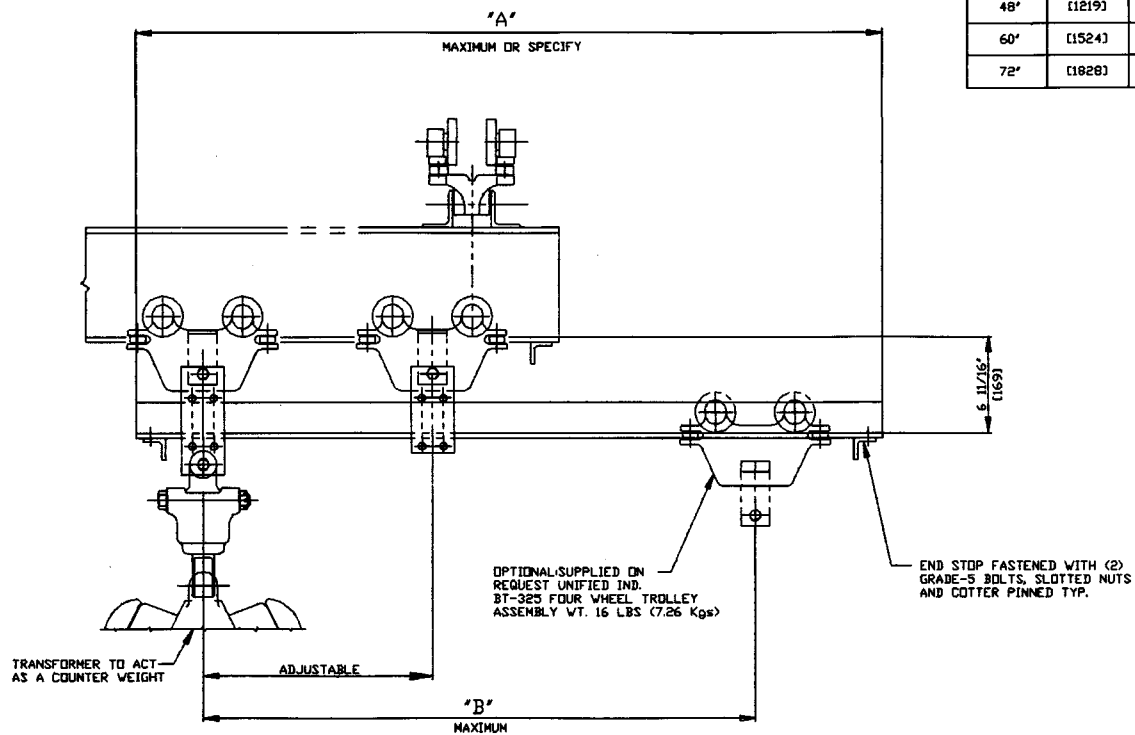
Unified telescoping counter balance units consist of two BT-325 trolleys with adjustable brackets supporting a transfer beam. The transfer beam is a "T" section 2.62" in height with a hardened and ground flat rail 3.25" in width. (See trolley section for trolley specifications).

Transfer beam is mounted with trolleys for operation on either flat rail or S-Beam. End stop bolted to the extended end completes the assembly.

Options

- Specify transfer beam length - 6 feet maximum
- S-300 universal swivel assembly

'A' DIM.		'B' DIM.	
36'	[914]	27.75'	[7043]
48'	[1219]	39.75'	[1009]
60'	[1524]	51.75'	[1314]
72'	[1828]	63.75'	[1619]



DESIGNED TO ACCOMMODATE PORTABLE GUN WELDING TRANSFORMER ONE END AND PORTABLE WELDING GUN AND BALANCER OTHER END NOT TO EXCEED 200 LBS (90.72 Kgs)



Application

Unified medium duty telescoping units are designed for the suspension of portable spotweld guns, power tools balancers, hoists fixtures etc. and other light or medium weight loads not exceeding recommended rated loads. See next page for rated loads of various extensions.

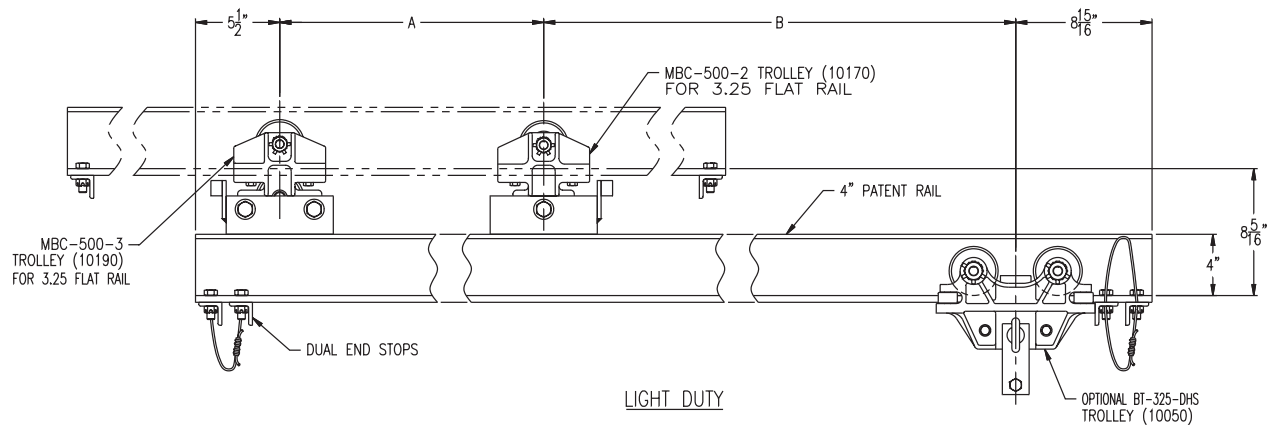
Specifications

Unified medium duty telescoping units consist of one two-wheel and one three-wheel trolley or carrier head opposite of overhang, mounted to a transfer beam. The medium duty units have a compound section, with a hardened and ground flat track 3.25" in width. (See pages 9, 23 for trolley or carrier head specifications).

Transfer beam is mounted with trolleys or carrier heads for operation on either flat rail or S-Beam. End stops bolted to each end of transfer beam complete the assembly.

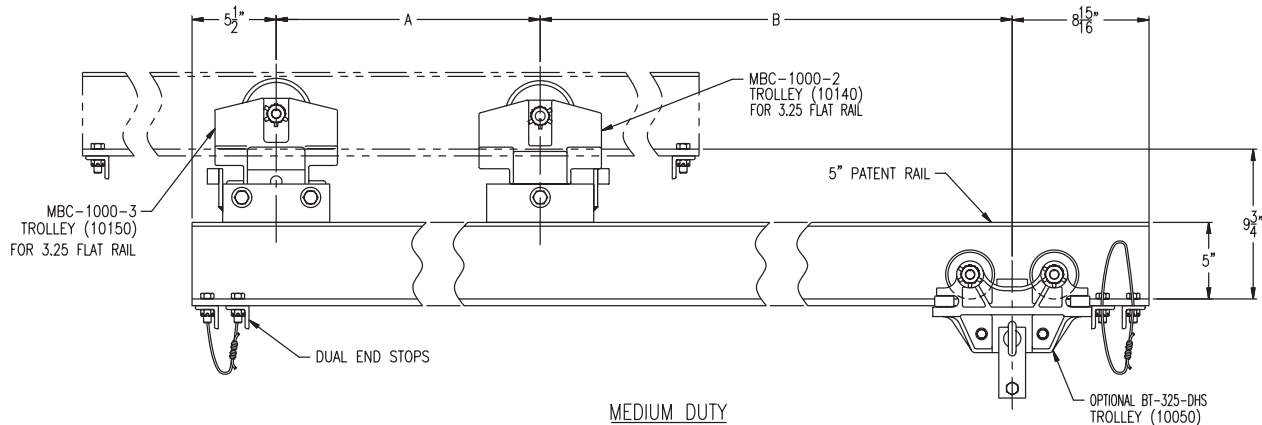
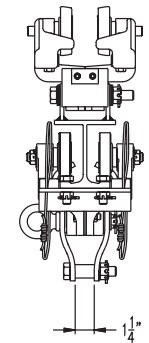
Options

- Transfer beam overhang opposite of extension to your specifications
- Standard redundant end stops (option for single end stop.)



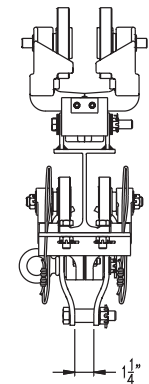
LIGHT DUTY

"A"	"B"							
	12" [304 mm]		24" [609 mm]		36" [914 mm]		48" [1219 mm]	
	LBs	Kgs	LBs	Kgs	LBs	Kgs	LBs	Kgs
18" [457 mm]	300	134.4	225	100.8	175	78.4	100	44.8
24" [609 mm]	330	147.8	250	112	200	89.6	100	44.8
30" [762 mm]	360	161.3	275	123.2	200	89.6	100	44.8



MEDIUM DUTY

"A"	"B"							
	12" [304 mm]		24" [609 mm]		36" [914 mm]		48" [1219 mm]	
	LBs	Kgs	LBs	Kgs	LBs	Kgs	LBs	Kgs
18" [457 mm]	600	268.8	400	179.2	250	112	200	89.6
24" [609 mm]	650	291.2	500	224	350	156.8	250	112
30" [762 mm]	725	324.8	550	246.4	425	190.4	325	145.6





Application

Unified standard duty telescoping self-equalizing tandem trolley units are designed for the suspension of portable spotweld guns, power tools, balancers, hoists, fixtures, etc., and other loads not exceeding recommended rated loads. See next page for rated loads of various extensions.

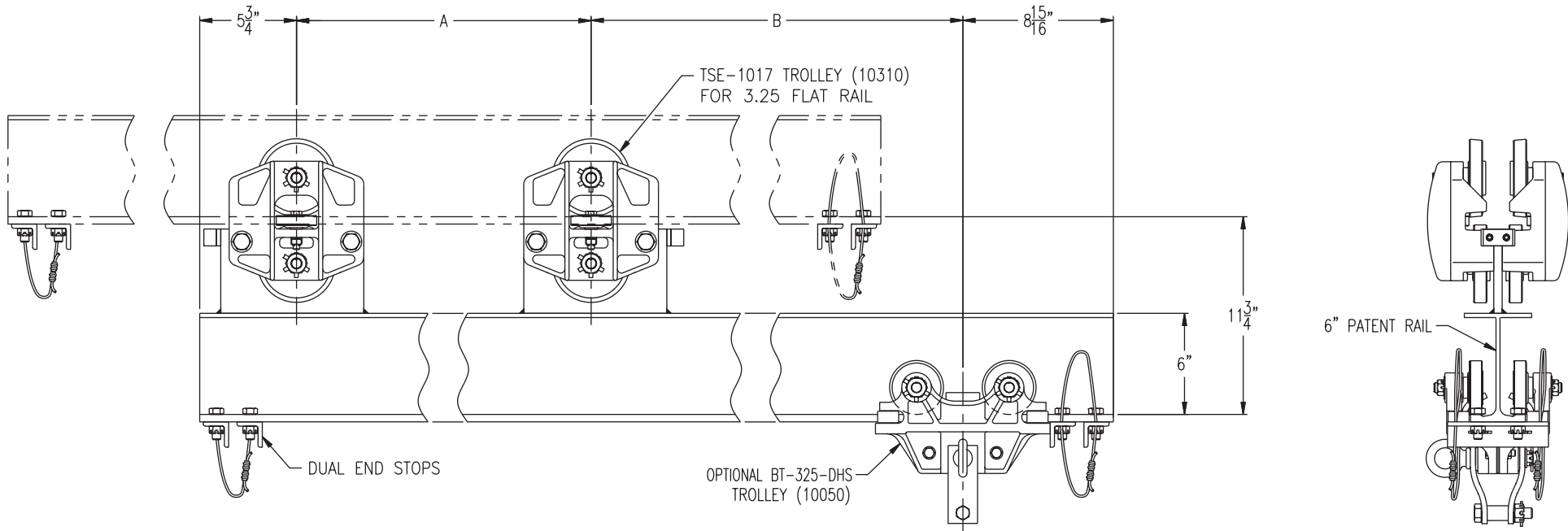
Specifications

Unified standard duty telescoping units consist of two tandem trolleys welded to a transfer beam. The transfer beam is a compound section 6.0" in height with a hardened and ground flat rail 3.25" in width. (See page 35 for trolley specifications).

Transfer beam is mounted with tandem trolleys for operation on either flat rail or S-Beam. End stops bolted to each end of transfer beam complete the assembly.

Options

- Transfer beam overhang opposite of extension to your specifications ("C" dimension).
- Standard redundant end stops (option for single end stop.)



TROLLEY SPECIFICATIONS

RATED LOAD: 2,500 LBS. (1120 Kgs)
 WEIGHT: 31 LBS. (14 Kgs)
 BODY: HIGH TENSILE ALMAG
 WHEEL: 4 5/8" [117] DIA.
 STUD: 5/8" [15] DIA.

LAB TESTING DATA

YIELD STRENGTH: 22,000 (9856 Kgs)
 THRUST ROLLERS: 2.4 [61] DIA. BALL BEARING.
 ULTIMATE
 TENSILE STRENGTH: 30,000 (13,440 Kgs)

NOTE:

WHEN ORDERING SPECIFY EXACT WIDTH OF RUNNING SURFACE FLANGE.
 1. 3.25" [82.6] FOR STD. FLAT RAIL AND 3.33" [84.6] FLAT RAIL.
 2. 3.33" [84.6] FOR S6 BEAM

"A"	DIMENSION "B" EXTENDED LOAD RATINGS IN POUNDS & KILOGRAMS												
	IN.	MM	12"	304 mm	24"	609 mm	36"	914 mm	48"	1219 mm	60"	1524 mm	72"
18	457	1500 LBS	672 KGS	1075 LBS	481.6 KGS	850 LBS	380.8 KGS	700 LBS	313.6 KGS	575 LBS	257.6 KGS	500 LBS	224 KGS
24	609	1675 LBS	750.4 KGS	1250 LBS	560 KGS	1000 LBS	448 KGS	850 LBS	380.8 KGS	725 LBS	324.8 KGS	500 LBS	224 KGS
30	762	1800 LBS	806.4 KGS	1400 LBS	627.2 KGS	1150 LBS	515.2 KGS	950 LBS	425.6 KGS	800 LBS	358.4 KGS	500 LBS	224 KGS
36	914	1875 LBS	840 KGS	1500 LBS	672 KGS	1250 LBS	560 KGS	950 LBS	425.6 KGS	800 LBS	358.4 KGS	500 LBS	224 KGS
42	1066	1950 LBS	873.6 KGS	1600 LBS	716.8 KGS	1300 LBS	582.4 KGS	950 LBS	425.6 KGS	800 LBS	358.4 KGS	500 LBS	224 KGS
48	1219	2000 LBS	896 KGS	1675 LBS	750.4 KGS	1300 LBS	582.4 KGS	950 LBS	425.6 KGS	800 LBS	358.4 KGS	500 LBS	224 KGS



Application

Unified heavy duty telescoping self-equalizing tandem trolley units are designed for the suspension of portable spotweld guns, power tools, balancers, hoists, fixtures, etc., and other loads not exceeding recommended rated loads. See next page for rated loads of various extensions.

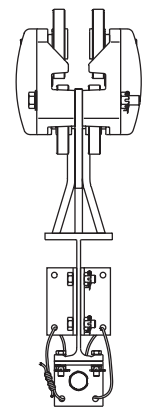
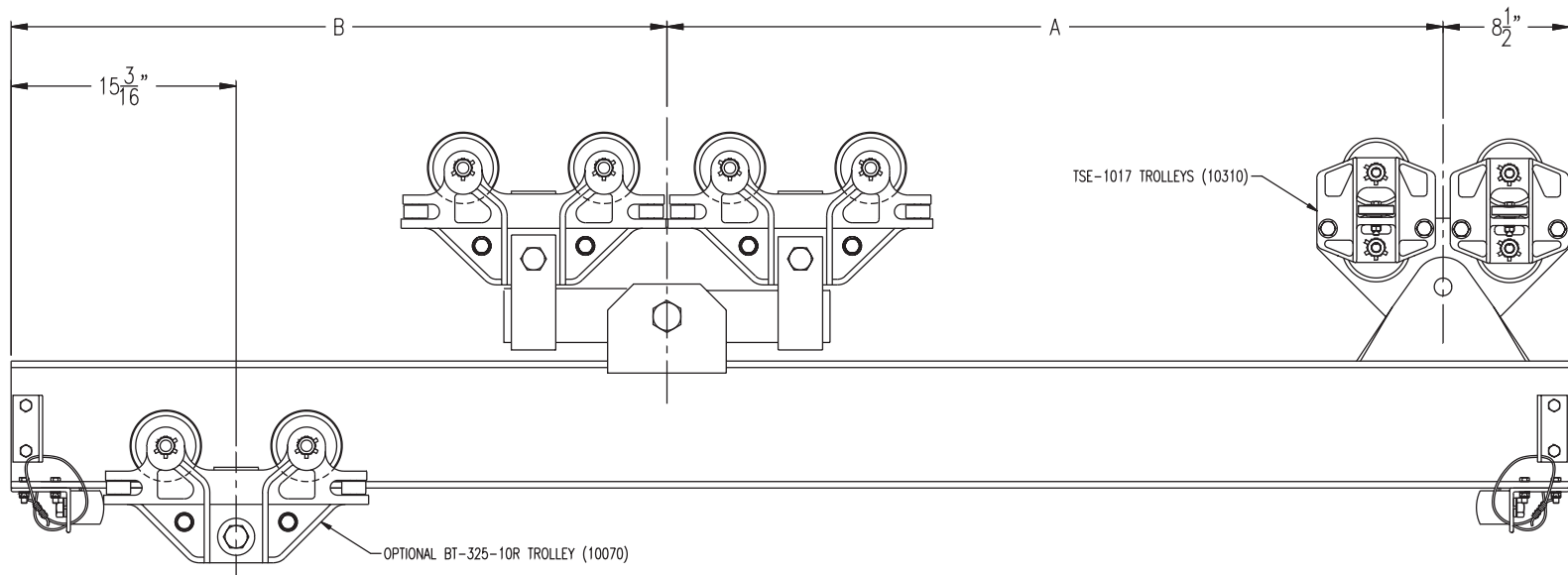
Specifications

Unified heavy duty telescoping units consist of two tandem trolleys welded to a transfer beam.

Transfer beam is mounted with tandem trolleys for operation on either flat rail or S-Beam. End stops bolted to each end of transfer beam complete the assembly.

Options

- Transfer beam overhang opposite of extension to your specifications ("C" dimension).



BEAM SIZE	"A"		"B" LOAD IN POUNDS AND KILOGRAMS							
			36"	914 mm	48"	1219 mm	60"	1524 mm	72"	1828 mm
8"	36"	914 mm	4000 LBS	1792 KGS	3425 LBS	1534.4 KGS	3000 LBS	1344 KGS	2650 LBS	1187.2 KGS
8"	48"	1219 mm	4570 LBS	2047.4 KGS	4000 LBS	1792 KGS	3550 LBS	1590.4 KGS	3200 LBS	1433.6 KGS
8 1/2"	60"	1524 mm	5000 LBS	2240 KGS	4450 LBS	1993.6 KGS	4000 LBS	1792 KGS	3625 LBS	1624 KGS
8 1/2"	72"	1828 mm	5325 LBS	2385.6 KGS	4800 LBS	2150.4 KGS	4350 LBS	1948.8 KGS	4000 LBS	1792 KGS

FOR ADDITIONAL LOADS AND DIMENSIONS, CONSULT FACTORY.



Unified Industries bridge crane and telescope unit combination for extending loads beyond normal span of runway.

Unified self-aligning carrier SAC-1020-1 used for runways that are not parallel.

Unified anti kick-up carrier MBC-1000-3 for opposing counter thrust of extended load.

CAUTION

This bridge crane has a safe load rating, which has been clearly marked on both sides by the manufacturer. The total weight of the suspended load should never exceed 100% of this limit. The weight of all handling devices such as buckets, magnets, grabs, balancers, hoists, weldguns, etc. must be included as a part of the suspended load. The weight of such devices should therefore be determined and clearly marked.

Consideration should be given when installing hoisting devices. Load ratings for such devices may exceed the load rating of the bridge crane.

The operator should inspect this bridge crane for loose bolts and worn, cracked or distorted parts prior to use (inspection should include all handling devices and mounting equipment). Defective parts should be replaced with manufacturer-approved parts before use of bridge crane is resumed.

This bridge crane conforms to the safety standards of the U.S. Occupational Safety and Health Administration (OSHA). Any alteration of its structure or change in its rated load capacity may render null and void any manufacturer's warranties, expressed or implied.

Ref: Code of Federal Regulations,
U.S. Labor Dept. Book #29,
Parts 1900 to 1910.
Revised as of July, 1984.